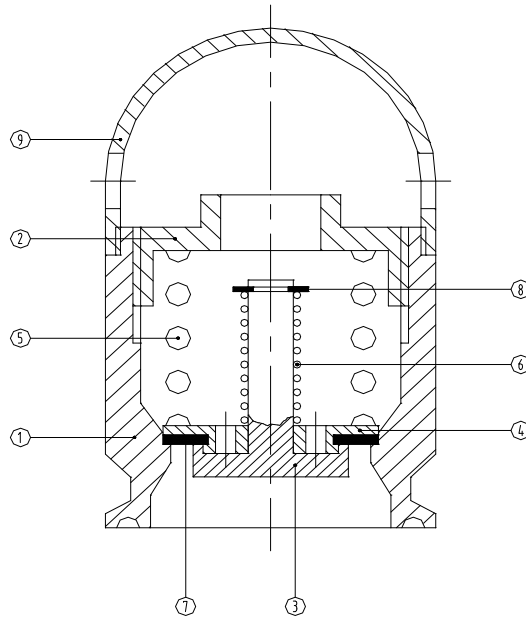


# Vacuum pressure valve

## triclover connections

CODE K64VP



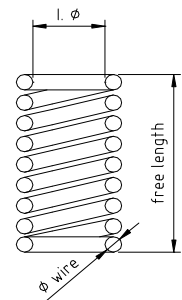
- 1. Valve casing
- 2. Adjusting cap
- 3. Head seal
- 4. Diaphragm
- 5. Pressure spring
- 6. Vacuum spring
- 7. Seal
- 8. Snap ring
- 9. Cap

### Coding

Pos.	Code	Stan.	1 1/2" 38	2" 51	2 1/2" 63	Mat.	Det.
1	K64VP		38			4L	01
1	K64VP			51		4L	01
1	K64VP				63	4L	01
2	K64VP		38			4L	02
2	K64VP			51		4L	02
2	K64VP				63	4L	02
3	K64VP		38			4L	03
3	K64VP			51		4L	03
3	K64VP				63	4L	03
4	K64VP		38			4L	04
4	K64VP			51		4L	04
4	K64VP				63	4L	04
5	K64VP		38			4	05
5	K64VP			51		4	05
5	K64VP				63	4	05
6	K64VP		38			4	06
6	K64VP			51		4	06
6	K64VP				63	4	06
7	K64VP		38			S	07
7	K64VP			51		S	07
7	K64VP				63	S	07
8	K64VP		38			4	08
8	K64VP			51		4	08
8	K64VP				63	4	08
9	K64VP		38			4L	09
9	K64VP			51		4L	09
9	K64VP				63	4L	09

**Pressure spring**

Valve size	Spring code	I. $\bar{A}$	$\bar{A}$ wire	Free length	No. coils
1 1/2"	K64VP38.05	23 mm	3 mm	34 mm	5 1/2
2"	K64VP51.05	34 mm	4.5 mm	50 mm	5
2 1/2"	K64VP63.05	44 mm	5.5 mm	61 mm	5



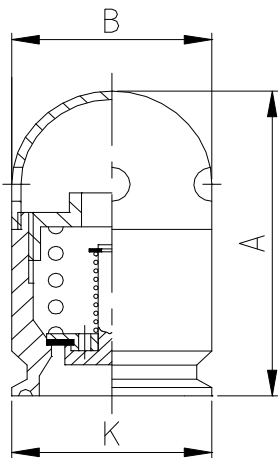
**Vacuum spring**

Valve size	Spring code	I. $\bar{A}$	$\bar{A}$ wire	Free length	No. coils
1 1/2"	K64VP38.06	8 mm	0.55 mm	25 mm	13
2"	K64VP51.06	10 mm	0.6 mm	40 mm	8 1/2
2 1/2"	K64VP63.06	12 mm	0.7 mm	47 mm	8

**Technical data**

Opening pressure	adjustable	0 - 1.3 bars with standard springs
	adjustable	up to 2.2 bars with bigger springs
Vacuum pressure	fixed	0.1 bars

**Dimensions**



DN	A	B	K
1 1/2"	38	78,0	48,0
2"	51	102,0	62,0
2 1/2"	63	113,0	80,0